



# Quick Start Guide

## REX300

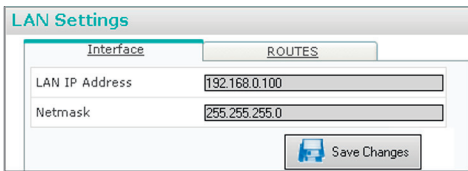
Version

2<sub>en</sub>

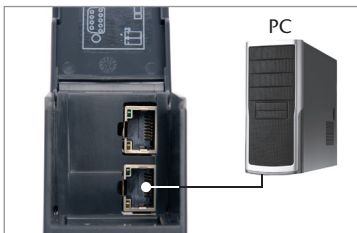


1. First, wire up the REX 300 with a supply voltage of 10-30 VDC.

**Note:** If you wish to use the myREX24, please read the notes on the final page (PTO).



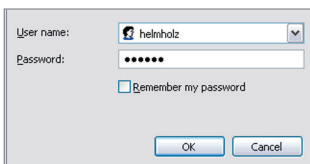
2. By default the REX 300 uses a static IP address (IP: 192.168.0.100, subnet mask: 255.255.255.0).  
**Note:** First check with your network administrator that this address is compatible with your network and that it is available for use.



3. If the IP address of your PC needs to be changed in order to reach the Webinterface of the REX300, carry out steps A to C next. (See overleaf)  
Connect the LAN interface of your computer to the LAN interface of the REX 300. Use a crossover cable for this connection between your PC and the REX 300.



4. Start a browser (Internet Explorer, Opera, Firefox, ...) and enter the IP address of the router in the address field.



5. In order to register with the REX 300, enter the following data:

username: helmholz  
password: router

**Note:** For security reasons, the password of the router should be changed as soon as the router is configured; this also applies to the "root" user.

System | **LAN** | Modem | Internet | DHCP | DNS Server

**LAN Configuration**

**LAN Settings**

Interface: Interface | ROUTE

LAN IP Address: 192.168.0.100

Netmask: 255.255.255.0

REX300 wizard

Choose Your Wizard

Which Wizard do you want to execute?

- ☒ LAN Settings - Wizard for LAN Settings
- ☒ Internetconnection - Wizard for setting up the Internet Connection
- ☒ VPN - Setting up the VPN Connection

Start Cancel ?

- When necessary, the IP address (LAN address) and the subnet mask of the router can be configured via the menu item Network -> LAN. The router is accessible in the LAN network via this IP address.

**Note:** If the IP address is to be changed, it must correspond to the address range (subnet mask) of your computer. See steps A to C. After making the change, restart the REX 300.

## Information

The device can also be set up using the Assistant integrated in the Webinterface.

The following Assistants are integrated in the Webinterface:

- **LAN Settings**  
(To configure the LAN interface)
- **Internet Connection**  
(To configure the Internet connection)
- **VPN**  
(In order to set up a VPN Tunnel)

- Using the menu item "System -> User", usernames for logging in at the REX 300 can be created, edited or deleted. In addition, user permissions can be defined here.

**Usermanagement**

Usermanagement

Username	Password	Fullname	Administration	Modem Dialin	VPN Dialin
helmholz	*****	Administrator	✓	✓	✓
root	*****	Root	✓	✓	✓

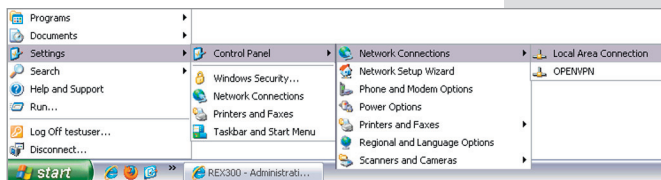
**Internet Configuration**

**Internet Settings**

Internet Connection: no Internetconnection

- Using the menu item "Network -> Internet", the type of Internet connection to be used by the REX 300 can be defined.

- Instructions for accessing the REX 300 via the PG/PC interface of MPI/PROFIBUS and Ethernet PLCs are described overleaf. Continue with the appropriate step I.

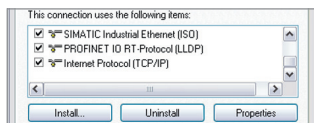


**A)** If the IP address of your computer must be modified in order to reach the REX 300, continue with the following steps.

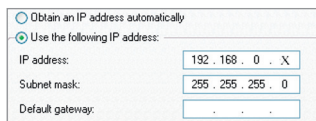
The REX 300 is delivered with an IP address set to 192.168.0.100. Your computer must be in the same IP address range (subnet).

This applies not only for the IP address but also for the subnet mask.

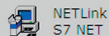
To make the necessary changes, open the properties of your LAN connection (Start -> Control Panel -> Network Connections).



**B)** Under “Properties” of the “Internet Protocol (TCP/IP)”, modify the IP address of your computer.



**C)** The IP address of your computer must be in address range 192.168.0.x and the subnet mask must be identical to the REX 300 (255.255.255.0).



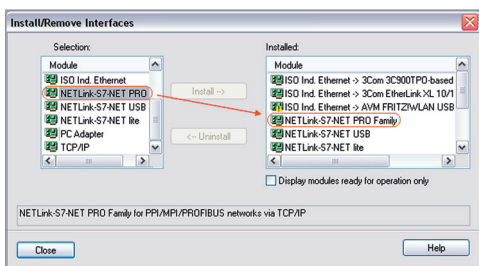
## I. PG/PC-interface for MPI/PROFIBUS-PLCs

(Not possible with REX 300 eco)

In order to reach the REX 300 MPI/PROFIBUS-SPSs, the following steps must be carried out.

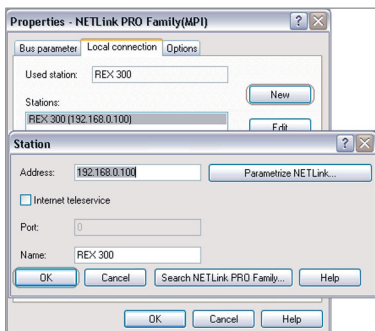
II. Install the NETLink®-S7-NET driver, either from the accompanying CD or download the latest version from the Internet at [www.helmholz.com](http://www.helmholz.com).

III. During installation of the driver, add the interface NETLink®-S7-NET PRO Family, afterwards, the REX 300 can be used from the PG/PC interface.



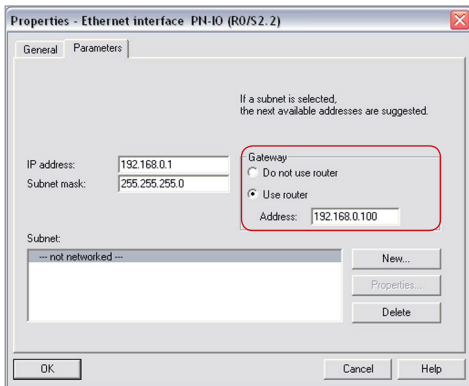
IV. Next, open the PG/PC interface and select the properties of the NETLink® PRO Family. New routers can be added via the register “Local connections” using the “New” key. Enter the IP address and the name of the router. Here, enter the LAN IP address of the REX 300. If either a VPN connection or myREX24 are to be used, also enter the LAN IP address of the REX 300 here.

**Note:** By default, in a REX 300, the ports required for communication are enabled by the driver. These settings are in the menu “Interfaces -> MPI/PROFIBUS -> Enable Ports through firewall”.



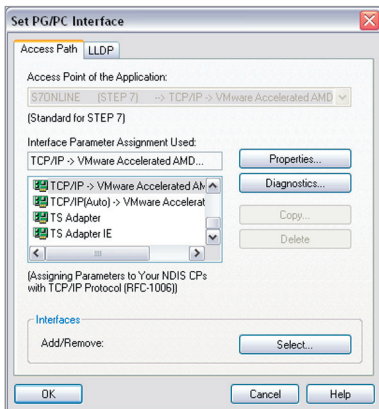
Enable Ports through firewall ☒

V. After this step, the system can be worked on from the S7 software.



### I. PG/PC-interface for Ethernet-PLCs

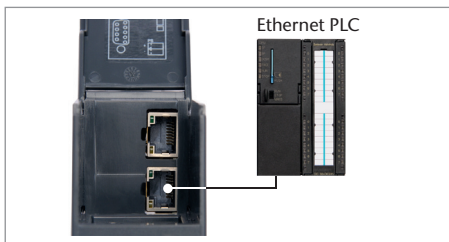
In order to reach an Ethernet PLC via a VPN connection, activate and correctly complete the option “Use router” in the Ethernet interface of the PLC to be used for remote management. The IP address to be entered under “Address” must correspond to the LAN IP address of the REX300. The IP address of the PLC must be in the address range (subnet) of the REX 300 LAN interface.



II. In order to reach the PLC via the VPN, just select the corresponding interface. This should be chosen such that TCP/IP on the interface shows which serves as the Internet access. For laptops e.g. “TCP/IP -> Intel WiFi Link”.

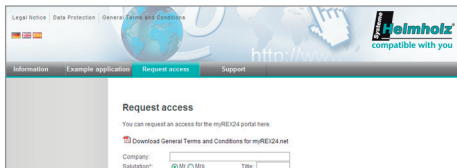
**Note:** If the PLC is to be connected directly to the REX 300, these must be inter-connected using the Ethernet cable (crossover) enclosed.

If the REX 300 is connected to an Ethernet switch then either a straight-through or crossover cable can be used.



III. As soon as a VPN-connection to the REX 300 has been established, the PLC from the project can be worked on (e.g. hardware download, monitor variables etc.).

**Note:** The PN IO-directory of Ethernet PLCs is not displayed via the reachable participants.



## myREX24.net

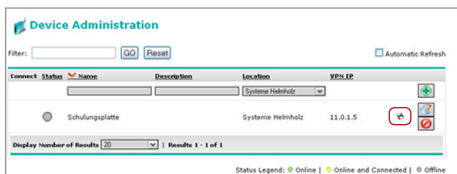
### Logging in

In order to use myREX24, login under [www.myREX24.net](http://www.myREX24.net) -> "Request access". Fill out the fields required there. After "Send"ing the form you will receive your access data by e-mail. Under "www.myREX24.net -> Support -> Download", use this access data to download the necessary software (shDIALUP) and an example application.



### Logging in at the Portal

As soon as the shDIALUP software has been installed and tested, you can use your access data to log in to myREX24.

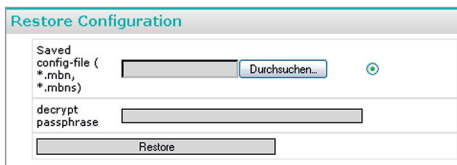


### Creating a system configuration

Read the corresponding example application.

### Downloading a system configuration

After a configuration has been entered, this can be stored on your PC by pressing the Floppy Disc symbol.



### Playing a system configuration

As described in steps 3 to 5, open the Webinterface of the REX 300 and load the configuration via the menu "System -> Import/Export". After a restart of the system and dependent on the configuration, the REX 300 registers with myREX24.



### Establishing a connection

A connection to the system only be established via shDIALUP in the myREX24 Webinterface.

**LED description**

<b>SF</b>	Indicates an error in the router (see Logging in Webinterface)
<b>Con VPN</b>	Continuously lit: Internet connection active flashing: VPN connection active
<b>RxD</b>	REX 300 is logged on to the MPI/PROFIBUS
<b>TxD</b>	Data is being transferred on the MPI/PROFIBUS interface
<b>Rdy</b>	This LED must be continuously lit after approx. 75 sec.
<b>ON</b>	Indicator light for power supply

**Factory Settings**

Carry out the following steps to reset the REX 300 back to its default, factory settings:

- Switch on the device
- Wait until the Rdy LED flashes
- Press the Dial Out key and hold it depressed until TxD flashes
- Press the Dial Out key again (RxD lights up)
- Press the Dial Out key once more (TxD changes to orange)
- To complete the reset, press the Dial Out key one more time

The complete configuration details have now been deleted.

The REX 300 is now reset to its factory settings and can be configured anew.

**Important:** The IP address of the REX 300 is set back to 192.168.0.100.

**Note**

We have checked the content of this Quick Start Guide for conformity with the hardware and software described. Nevertheless, because deviations cannot be ruled out, we cannot accept any liability for complete conformity. The information in this Quick Start Guide is regularly updated. When using purchased products, please heed the latest version of the Quick Start Guide, which can be viewed in the Internet at [www.helmholz.com](http://www.helmholz.com), from where it can also be downloaded.

Our customers are important to us. We are always glad to receive suggestions for improvement and ideas.